



O.L.R.W. Newsletter

Oahu League of Republican Women

Carol Thomas, President • 808-261-1146 • kaneohecarol@hawaii.rr.com

Pam Smith, Editor • 808-398-5556 • pamsmith@hawaii.rr.com

June-August 2007

Luncheon / Meeting

June 7, 2007

Waikiki Yacht Club

11:00 A.M. Check In

11:30 A.M. Meeting

12:00 Noon Lunch

Meal cost is \$20.00

Menu

Toss Green Salad
with Italian Dressing
Sautéed Chicken Marsala
with Linguine, vegetables
and Garlic Bread
Chocolate Mousse
Coffee or Tea

Reservations

Jeannine Sills

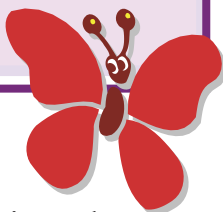
595-5172

dust@hawaii.rr.com

or

www.oahuleague.homestead.com

Reservations must be made by June 4th. We are committed to pay for all lunches reserved, so **No Shows will be charged for their lunch.** Please - no walk-ins.



Get Well

To all who can't join us because you are ill - Get well soon.
We miss you



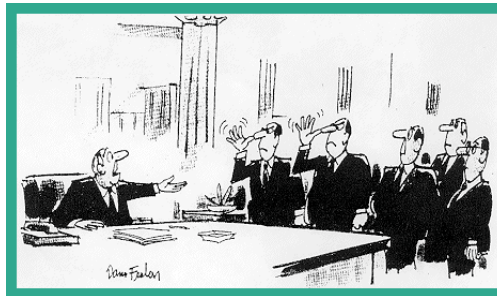
Guest Speaker

Representative Cynthia Thielen

District 50

Kailua, Kaneohe Bay

Cynthia Thielen has represented the windward side of Oahu for the past 17 years, and served as assistant Republican floor leader since 1999. She is the co-chair of the Women's Legislative Caucus and the Hawaii board member on the National Caucus of Environmental Legislators. She serves on numerous committees in the Hawaii Legislature. She has a great website to keep her constituents informed which even includes a little humor (see below). She is a great advocate for women and environmental issues.



"That's it? That's the minority report?"



Remember...

We will be taking a two month summer break this year. You will receive a newsletter toward the end of August to announce our September meeting

Happy Birthday!

June

Deborah Alameida, Elizabethh Anderson, Sandra Bangerter, Golden Wheelden-Davis, Gail Dukes, John Henry Felix, Frank Henrion, Shannon Hough, Alice Kealoha, June Lee, Gov. Linda Lingle, Georgia Miller, Marlys Pendelton, Patti Rabin, Cynthia Rosebrough, Harriet Rotz, Donna Lei Smythe

July

Reidar Akini, Jane Au, Emily Auwae, Celyn Chong Kee, Miriam Hellreich, Judy Jordan, Shirley Krause, Jaquie Lowe, Rep. Barbara Marumoto, Mike Peters, Rep. Kym Pine, Ann Ramsey, Juanita Schiltz, Ann Stevens, Ruth Terna, Betty Viers

August

Sam Aiona, Bob Awana, Lavonna Corzine, Councilman Charles D'jou





Member Profiles

by Nancy Gallagher

Eliza Talbot

During a working lunch (all work – no food), I had the opportunity to interview our Hawaii Republican Party Executive Director, Eliza Talbot, at her office. Amidst mini conferences and phone calls I was able to converse with that rare species, a young Republican. Yes, they do exist.

Eliza was born August 4, 1982 in Reno, Nevada. Her mother was a hard core Democrat and her Dad a staunch Republican who listened to Rush Limbaugh every morning. Shortly after her birth the family moved to Kailua, Hawaii in order to be closer to family.

When Eliza finished kindergarten the family relocated to Ventura, CA. Gradually, her hard core Democrat Mom found herself leaning towards the “right” until one day it all clicked — she converted and became a Republican. She embraced the GOP wholeheartedly bringing Eliza with her to meetings and working on campaigns and fundraisers. Eliza tells me,



“I grew up knowing that the Republican way was the right way. I couldn’t wait until I turned 18 so I could vote.” Though the family remained in California, they returned to Hawaii every year to spend time at their place in Maui and to visit relatives in Oahu.



Finishing high school, Eliza enrolled at the University of Southern California. According to Eliza, “colleges tend to push students into becoming Democrats, but if you talk to them, one on one, you find many students tend to think more like Republicans. They want fewer taxes. When they start earning a living they really see the differences!” she says.

A strong believer in community service, Eliza made time during her busy college years to work with the Best Buddies Volunteers. As a Best Buddy, Eliza tutored special needs students at a local high school. She highlights this as a very rewarding experience.

Graduating with a degree in International Relations and Communications, Eliza returned to Hawaii. She moved into a townhouse in Hawaii Kai with friends.

Starting off as an intern in Governor Lingle’s Communications Office, Eliza continued to fine tune her Republican principles. Moving on, she became Representative Kymberly Pine’s Legislative Aide. Then, in October 2005, she took on the task of Victory Campaign Coordinator at the Hawaii GOP Headquarters. She was responsible for scheduling and coordinating activities for GOP Candidates. Creating campaign materials, communicating with the Republican National Committee, and assisting Party Chairman, Sam Aiona were just a few of her duties.

Recently, Eliza was named Executive Director of the Hawaii GOP. In this position she hopes to:

9th Annual

Hawaii Republican Party

Golf Tournament

EWA BEACH GOLF CLUB

Friday, July 13, 2007

Shotgun Start 12:00PM

3-Person Modified Scramble

Check-in 10:30AM

Three Person Team - \$500.00

Call 593-8180



- Change the minority status of the Hawaii GOP to a majority status.
(I think this might take her a week or two...)
- Increase the GOP’s role in community service
- Get our GOP message of progress across to Hawaii

“People of my generation support Governor Lingle because she has a proven record of results in Hawaii and their fundamental values are in line with her goals. The challenge is to convey to young people that with more Republicans in the legislature, supporting the Administration, we will see even more progress in Hawaii.”

On a lighter note, when I asked Eliza if she was “available,” Joanne Bretschneider piped up from the adjoining office – “No, she is not available outside this office.” Eliza blushes and politely declines to answer. Undeterred, I start to pose the question, “Given a choice between a handsome Republican of moderate income and a wealthy Demo...” When I was interrupted by Joanne yelling, “Don’t even go there!” Blushing again, Eliza replied, “I’ve dated Democrats ---- and I’ve been able to convert all of them...” (Maybe she could be even more useful working “undercover”, so to speak, converting young male Democrats to our Party...).

Knowing that most of you ladies would like to know, I again asked if she is “available”. She quietly says that she is not in a serious relationship and like all girls her age is available until she meets Mr. Right. So ladies, if you know any young, dashing Democrats in need of conversion, see Eliza.

May Luncheon



50/50 Winner for May.

Kari Akini



Kari generously donated her cash winnings to the OLRW PAC.



New officers of the Hawaii Republican Party
(As pictured, left to right)

VC-Communications	Steve Bretschneider
Treasurer	Kathi Thomason (OLRW)
VC-Coordinated Campaigns	Marie Laderta
VC-Candidate Recruitment	Gae Bergquist-Trommald
VC-Coalitions	Eric Barsatan
Party Chairman:	Willes Lee (OLRW)
Secretary	Sheila Leas (OLRW)
VC-Community Service	Barney Ho

Welcome to our new members

Cheryl Ho • Anita Seyer Wong • Rep. Gene Ward

and a new Life Member, who Carol convinced to join with her outstanding convention speech:

Adrienne King

Volunteers

Five Oahu League Members were named as Volunteer of the Month during the past year.

Nancy Gallagher
Helene Webster
Lou Fleming
Edna Fujiwara
Jeri Jeffries

The Jill Frierson Award
for volunteer of the year went to Oahu League Member
BOB KESSLER

Hawaii Republican Party Convention

2007

Aloha to Jill Frierson

by Barbara Marumoto

Jill Frierson was the political mother of many elected Republicans. She started early. She would analyze the demographics of each and every district in Hawaii, then help recruit promising individuals. She would often draft campaign plans, budgets and polling questions. Candidates relied on her to design mailers and flyers which she did with an artistic flair. With her intelligence she was a sought-after political consultant, and with her compassion, held the hand of many a candidate throughout the campaign. Candidates, consultants, party officials, reporters from Hawaii and the mainland sought her out for advice and a viewpoint.

A dedicated Republican, Jill even took her turn as Chairman of the Party in the '80s. She served as Director of the House Republican Office as well as the Senate Republican Office. An excellent writer, she authored *The Little Red Book* that described the Byzantine budget-making process in the Legislature. She was instrumental in crafting redistricting maps for two state Reapportionment Commissions and protecting GOP interests. For her many gifts and talents, Gov. Linda Lingle recognized her as an Outstanding Volunteer for the Republican Party.

A modern Renaissance woman, Jill was a business person, a political consultant, a jewelry designer, an actress, a teacher, and a loving wife and mother. After her diagnosis Jill traveled as much as possible. At the invitation of a Roman company, she spent several weeks in the studio designing jewelry. Our condolences go to husband Jim and daughter Katie.

Aloha Jill.



Or bring it to our next meeting

Mail your check to:
Oahu League of
Republican Women
#C-105
725 Kapiolani Blvd.
Honolulu HI 96813

Oahu League of Republican Women Membership Application

Date

Birthday Month Day

Name

Address

City

Zip

Telephone

Fax

E-mail Address

Dues \$15.00 Yearly